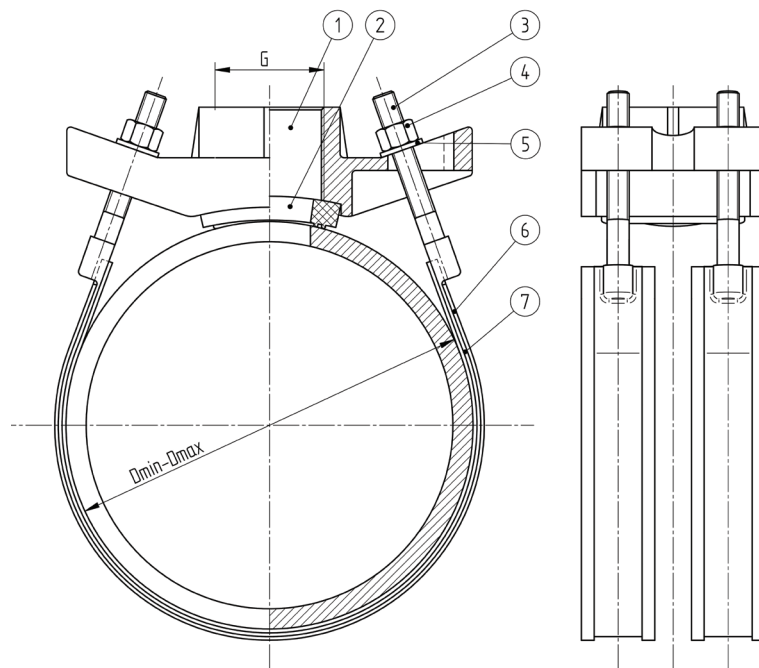




**Threaded pipe saddle - two bands
"RAPIDO FI"**



USE:

- For tapping on pipes made of different materials
- Other dimensions on request

MATERIALS:

- 1 - body - ductile cast iron protected with epoxy powder coating
- 2 - gasket - EPDM or NBR rubber
- 3-5 - nuts, bolts, washers: stainless steel
- 6 - rubber protection (on request)
- 7 - stainless steel band
- G - gas female threaded outlet

The product has been certified as suitable for contact with potable water.

Technical data sheet indicative and not binding, Idro Gas can change the informations contained in any moment without notice.

DN	Range [mm] D _{min} - D _{max}	Thread [G] from - to	Number of bands	Notes
100	110 - 130	2" - 2½"	2	
125	135 - 160	2" - 3"	2	
150	160 - 185	2" - 3"	2	
175	175 - 195	2" - 3"	2	
200	210 - 245	2" - 4"	2	
225	235 - 265	2" - 4"	2	
250	260 - 305	2" - 4"	2	
275	285 - 315	2" - 4"	2	
300	310 - 360	2" - 4"	2	
350	350 - 405	2" - 4"	2	
400	400 - 455	2" - 4"	2	
450	455 - 510	2" - 4"	2	
500	500 - 560	2" - 4"	2	
600	610 - 665	2" - 4"	2	
700	720 - 780	2" - 4"	2	
800	820 - 890	2" - 4"	2	
900	920 - 990	2" - 4"	2	
1000	1020 - 1090	2" - 4"	2	